
Quality grading for Pingliang red cattle carcass
For pan-fried purpose

4.2.3

1-6
C.2 6 7

4.2.4

6 7 0.5cm
3s 3s

4.2.5

6 7 30% 30%

4.2.6

5~6

0.5h 660lux

1 A
1

S	380kg	240kg	90%
A	330-380kg	210-240kg	80%-90%
B	330kg	210kg	70%-80%

5.2

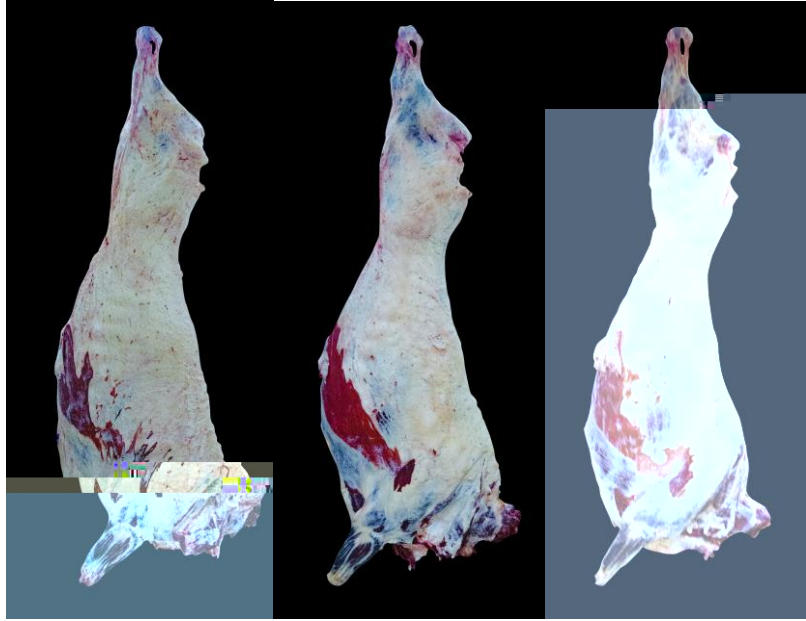
2-4 1-3

1 5-6 4-6

2

		S	A	B
	4	+	+	+
	3	+		
	2		+	+
	1	+		

A



S

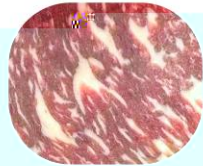
A

B

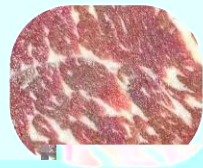
B



4级



3级

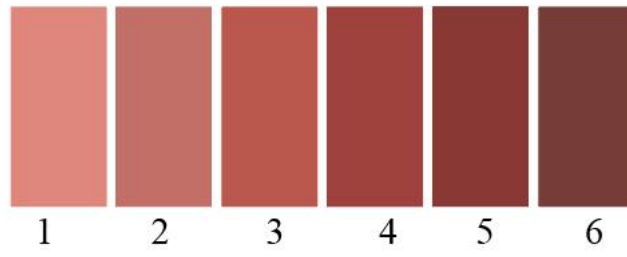


2级



C

C.1



C.2

